

Loose Horse Hair



- 0205003A **50% Horse Hair;
50% Hog Hair**
15 lbs.
-
- 0205004A **100% Gray Horse Hair**
15 lbs.
-
- 0205006A **100% Gray Horse Hair**
25 lbs.
-
- 0205009A **Synthetic Horse Hair**
15 lbs.
-
- 0205007A **50% Synthetic Horse Hair
50% Hog Hair**
25 lbs.

**Must UPS in two packages*

Rubberized Curled Hair

- 0205000A **1" x 24" wide
Rubberized Curled**
(per foot)
(75 foot roll)
- 0205001A **2" x 24" x 72"
Rubberized Curled**



Cotton

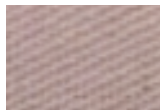
Go with the best! Consistent quality, very clean, can be split. Layers neatly. The best quality cotton to be found. 27" wide. 14 ounce.

- 0201000A **14# AAA Cotton**
(approx. 12 lbs.) Roll
(approx. 96 lbs.) Bale*
-
- 0201003A **12# Synthetic
White "Cotton"** Roll
(approx. 112 lbs.) Bale*

**Not eligible for UPS discounts*

Twill

- 0703025A **63" Natural Twill**
Very strong and heavy.
7.5 oz. per sq. yd.,
polycotton twill.
1-99 yd.
100 yd. roll
- 0703026A **82" – Pinstripe heavyweight**
Blue stripe on white
background – antique look
7 oz. per sq. yd., 100% cotton.
701 fire resistant finish.
1-99 yd.
100 yd. roll



Down Proof Ticking

A tightly woven 100% cotton fabric that is used to prevent feathers and down from working through the cover.

- 0703007A **Down Proof
Ticking**
44" Natural Color,
210 thread count



1-150
Approx. 100 yd. roll

- 0703051A **Premium White Ticking**
44", 300 thread count
Cut
100 yd. roll

Burlap

- 0702000A **40" Burlap**
10 oz.



10, 25, 50 yd. roll
100 yd. roll

- 0702003A **36" Synthetic
Burlap**
(no squeak)



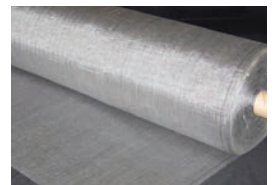
10, 25 yd. roll
125 yd. roll

- 0702001A **30" Sagless
Burlap**
17 oz.



10, 25 yd. roll
50 yd. roll

- 0702002A **30" Synthetic
Sagless**



25, 50, 100 yd.
250 yd.

- 0702005A **36" Synthetic
Sagless**
25, 50, 100 yd.
250 yd.